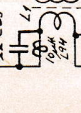
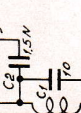
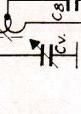
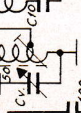
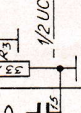
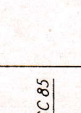
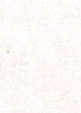
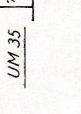
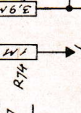
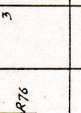
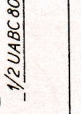
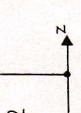
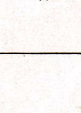
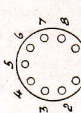
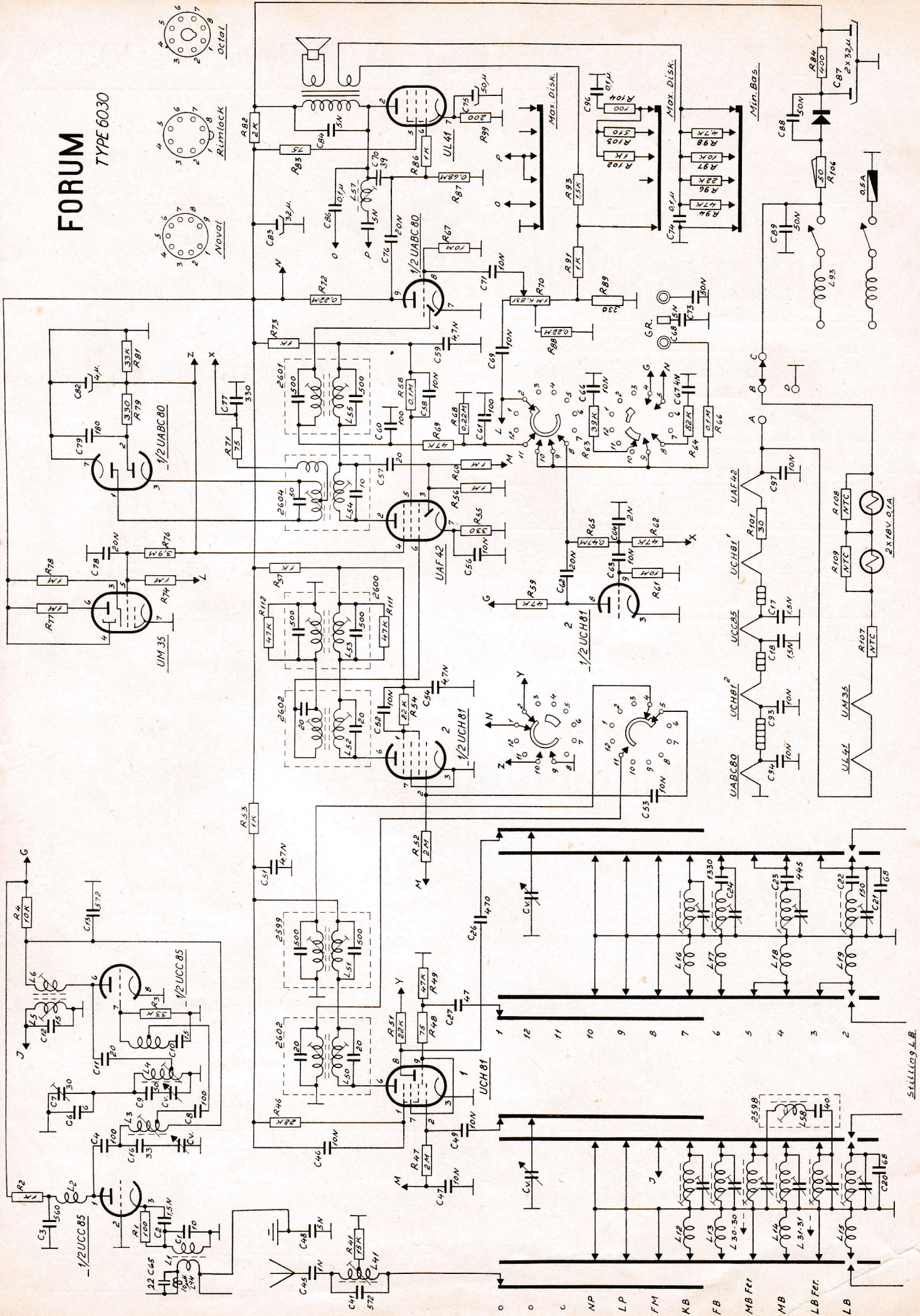




# FORUM

TYPE 6030



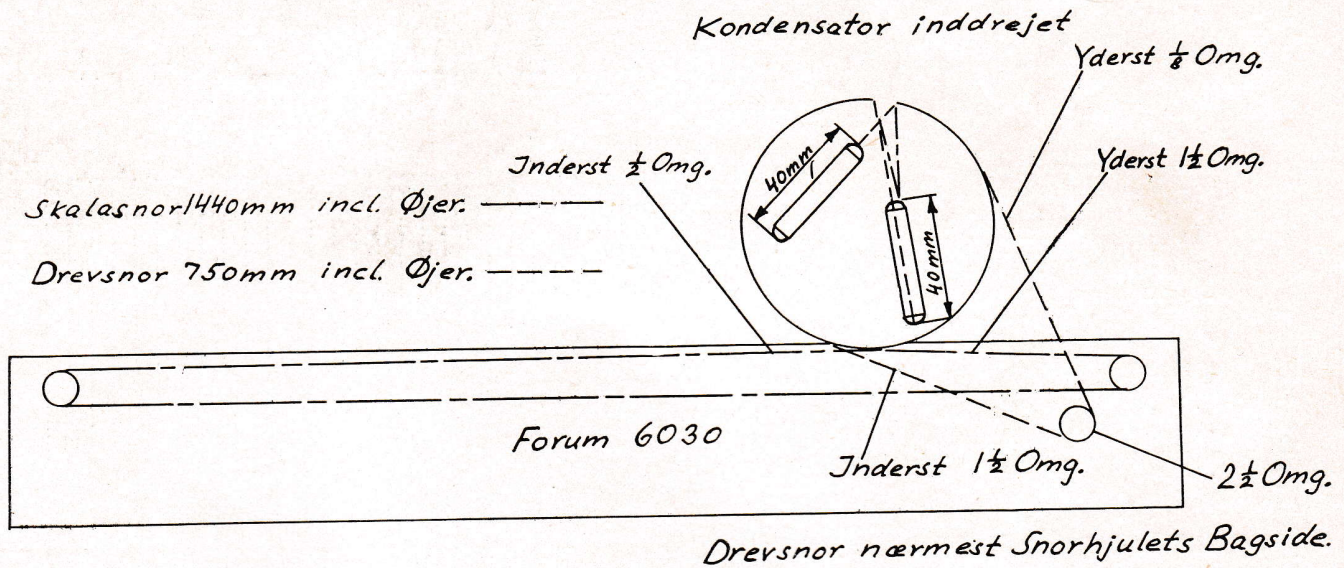
STILLING L.B.

# SIGNATUR- OG DELEFORTEGNELSE

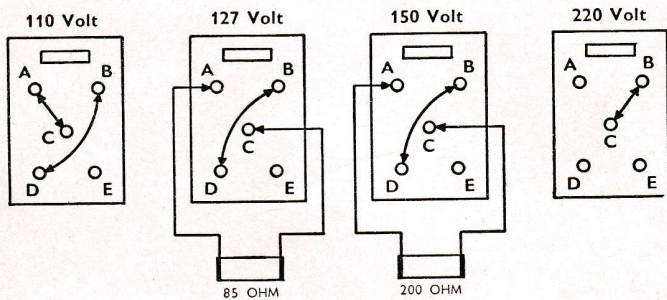
Part nr.		Part nr.		Part nr.		Part nr.	
C 1	Keram. 10pF-10 %	C 78	Olie Papir 20N-350 V =	R 83	Kulmodst. 75 ohm-1/2 watt	Diskantomstiller	740
C 2	» 15N-20/50 %	C 79	Keram. 180pF-20 %	R 84	Tråd GL 400 ohm-5 watt	Omraadeomstiller	742
C 3	» 560pF-10 %	C 80	» 500	R 86	Kulmodst. 1 K ohm-1/2 watt	Dobb. Trimmer	4286
C 4	» 100pF-20 %	C 81	» 52μF-520/350 =	R 87	» 680 K ohm-1/2 watt	Drejekondensator	6205
C 5	» 6pF-20 %	C 82	» 502	R 88	» 220 K ohm-1/2 watt	Snorskive til do.	2864
C 6	Trimmer 30pF	C 83	» 0,1μF-600 =	R 89	» 330 ohm-1/2 watt	Snorskive Ferrit	2863
C 7	Keram. 100pF-20 %	C 84	» 496	R 91	» 1 K ohm-1/2 watt	Ferritstave	334
C 8	» 50pF-10 %	C 85	Elko 32+32μF 320/350 =	R 93	» 1,5 K ohm-1/2 watt	Enstretterventil	6303
C 9	» 50pF-10 %	C 86	» 542	R 94	» 47 K ohm-1/2 watt	Skalalamber 18/0,1	642A
C 10	» 20pF-10 %	C 87	Olie Papir 50N-600 =	R 95	» 22 K ohm-1/2 watt	Sikring 0,5 A u/traad	652
C 11	» 15pF-10 %	C 88	» 50N-600 =	R 96	» 10 K ohm-1/2 watt	Udgangstrafra	5010
C 12	» 572pF-5 %	C 89	» 10N-20/50 %	R 97	» 47 K ohm-1/2 watt	Kabinet	5217
C 13	» 572pF-5 %	C 90	» 550	R 98	» 200 ohm-1 watt	Bagklædning	2336
C 14	» 53pF-10 %	C 91	Olie Papir 0,1μF-350 =	R 99	» 30 ohm-1 watt	Bundplade	2337
C 15	» 1,5N-20/50 %	C 92	Keram. 10N-20/50 %	R 101	» 1 K ohm-1/2 watt	Skala Bordapp.	2276
C 16	» 1,5N-20/50 %	C 93	Kulmodst. 100 ohm-1/2 watt	R 102	» 50 ohm-1/2 watt	Viser	2961
C 17	» 68pF-5 %	C 94	» 35 K ohm-1/2 watt	R 103	» 100 ohm-1/2 watt	Gummifodder	92
C 18	» 68pF-5 %	C 95	» 15 K ohm-1/2 watt	R 104	» 100 ohm-1/2 watt	Stof	2043-550
C 19	» 150pF-5 %	C 96	» 22 K ohm-1/2 watt	R 106	Tråd GLT 50 ohm-3 watt	Silkesnor	2045
C 20	» 445pF-5 %	C 97	» 75 ohm-1/2 watt	R 107	NIC (Ph. 100.026/01)	Skalaholdere	3204
C 21	Trofitul 1350pF-5 %	C 98	» 47 K ohm-1/2 watt	R 108	NIC (Ph. 100.092)	Skalahætter	5205
C 22	Keram. 470pF-20 %	C 99	» 22 K ohm-1 watt	R 109	NIC (Ph. 100.092)	Emballage	4194
C 23	» 572pF-5 %	C 100	» 2 M ohm-1/2 watt	R 110	Kulmodst. 47 K ohm-1/2 watt	Polydan Overtræk	4196
C 24	» 47pF-20 %	C 101	» 1 K ohm-1/2 watt	R 111	Antennespole	Skalaknap (Bordapp.)	795/11
C 25	» 572pF-5 %	C 102	» 2 M ohm-1/2 watt	L 1	Drosselspole	Områdeknop	795/12
C 26	Olie Papir 1N-5000 =	C 103	» 1 K ohm-1/2 watt	L 2	HF Anodespole	Ferritknop	795/12
C 27	Keram. 10N-20/50 %	C 104	» 22 K ohm-1 watt	L 3	Oscillatrorspole	Diskantknop	795/13
C 28	» 10N-20/50 %	C 105	» 350 ohm-1/2 watt	L 4	MF Primær Sp.	Basknap	795/13
C 29	Olie Papir 5N-5000 =	C 106	» 1 M ohm-1/2 watt	L 5	MF Sekundær Sp.	Styrkeknop	795/13
C 30	» 4,7N-20/50 %	C 107	» 1 K ohm-1/2 watt	L 6	KB Antennespole	Højttaler, Bordapparat	775
C 31	» 10N-20/50 %	C 108	» 47 K ohm-1/2 watt	L 12	KB Antennespole	Normaludf.	775
C 32	» 10N-20/50 %	C 109	» 47 K ohm-1/2 watt	L 13	»	3-D Udf.: Extra 2 Stk.	7305
C 33	» 10N-20/50 %	C 110	» 47 K ohm-1/2 watt	L 14	»	Filterspole (kun 3-D)	5012
C 34	» 4,7N-20/50 %	C 111	» 100 K ohm-1/2 watt	L 15	»	<b>Radio-Grammofonskabe:</b>	
C 35	» 20pF-10 %	C 112	» 39 K ohm-1/2 watt	L 16	»	Philips Værk Vekselstr.	2182
C 36	» 4,7N-20/50 %	C 113	» 82 K ohm-1/2 watt	L 17	»	B&O Skifter S510U	2183
C 37	» 100pF-20 %	C 114	» 470 K ohm-1/2 watt	L 18	»	Skala (Skab)	2278
C 38	» 100pF-20 %	C 115	» 100 K ohm-1/2 watt	L 19	»	Laagafbryder	6362
C 39	» 100pF-20 %	C 116	» 10 M ohm-1/2 watt	L 30	»	Gram. Lampet	2111
C 40	Olie Papir 20N-350 V =	C 117	» 20 K ohm-1/2 watt	L 31	»	Skalaknap (Skab)	795/11
C 41	» 2N-350 V =	C 118	» 47 K ohm-1/2 watt	L 31	»	Områdeknop	795/14
C 42	Keram. 22pF-10 %	C 119	» 70 m/m	L 41	»	Ferritknop	795/15
C 43	Olie Papir 10N-350 V =	C 120	» 688	L 50	»	Diskantknop	795/17
C 44	» 4N-350 V =	C 121	Kulmodst. 75 ohm-1/2 watt	L 51	»	Basknap	795/18
C 45	» 5N-5000 V =	C 122	» 220 K ohm-1 watt	L 52	»	Styrkeknop	795/13
C 46	» 10N-350 V =	C 123	» 1 M ohm-1/2 watt	L 53	»	<b>Højttalere (Skab):</b>	
C 47	Keram. 59pF-20 %	C 124	» 3,9 M ohm-1/2 watt	L 54	»	Normaludf.:	
C 48	Olie Papir 10N-350 V =	C 125	» 1 M ohm-1 watt	L 55	»	{ Koncert	7302
C 49	» 50N-600 V =	C 126	» 1 M ohm-1 watt	L 56	»	{ Højtone	7301
C 50	» 0,1μF-350 V =	C 127	» 350 ohm-1/2 watt	L 57	»	{ Bantam	7303
C 51	Olie Papir 20N-600 V =	C 128	» 33 K ohm-1/2 watt	L 94	»	{ Oval	7304
C 52	Keram. 530pF-20 %	C 129	» 33 K ohm-1/2 watt				
C 53	» 530pF-20 %						
C 54	» 530pF-20 %						
C 55	» 530pF-20 %						
C 56	» 530pF-20 %						
C 57	» 530pF-20 %						
C 58	» 530pF-20 %						
C 59	» 530pF-20 %						
C 60	» 530pF-20 %						
C 61	» 530pF-20 %						
C 62	» 530pF-20 %						
C 63	» 530pF-20 %						
C 64	» 530pF-20 %						
C 65	» 530pF-20 %						
C 66	» 530pF-20 %						
C 67	» 530pF-20 %						
C 68	» 530pF-20 %						
C 69	» 530pF-20 %						
C 70	» 530pF-20 %						
C 71	» 530pF-20 %						
C 72	» 530pF-20 %						
C 73	» 530pF-20 %						
C 74	» 530pF-20 %						
C 75	» 530pF-20 %						
C 76	» 530pF-20 %						
C 77	» 530pF-20 %						

Ved bestilling af reservedele bedes partnummer og modtagerens fabriktionsnummer angivet.

**Snortræk bordapparat**



**SPÆNDINGSOMSTILLING**



**Forlagsmodstande**

for 150 Volt: EL 200 ohm

for 127 Volt: EL 85 ohm

leveres mod pristillæg.

**Trimning** af AM-mellemfrekvens bør kun foretages med oscillograf.

Oscillografens HF kabel skal have lav udgangsimpedans (50 ohm).

Trimning af FM-mellemfrekvens og detektorkreds bør kun foretages med en målesender (der kan samtidig AM/FM moduleres), samt en oscillograf.

**Notater:**

---



---



---



---